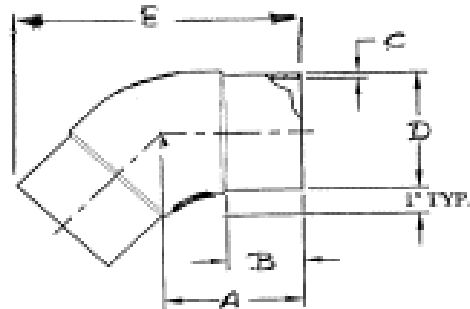


## Butt 45 Degree Elbows

Elongated



Molded of  
PE 3408 / PE100  
Black  
CODE 113

### SDR 17 (Standard Dimension Ratio) 100 PSI (Working Pressure as 73.4 F)

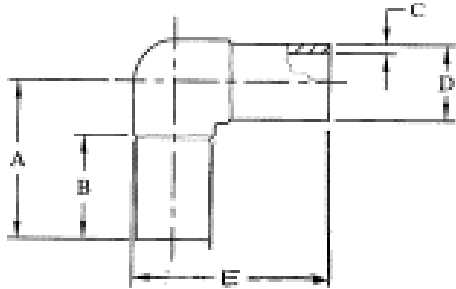
Nominal Diameter (inch)	A (inch)	B (inch)	C (inch) Wall	D (inch) OD	E (inch)	Weight (lbs.)	Product Code	Box Quantities	List Price
2" IPS	3.23	2.64	0.14	2.375	6.38	0.23	110 0002 17	20	\$15.04
3" IPS	4.72	3.86	0.206	3.5	9.33	0.72	110 0003 17	6	\$21.13
4" IPS	5.31	4.21	0.264	4.5	10.63	1.32	110 0004 17	3	\$24.82
6" IPS	6.89	5.35	0.39	6.625	14.09	3.77	110 0006 17	4	\$72.62
8" IPS	8.46	6.54	0.508	8.625	17.48	8.03	110 0008 17	1	\$199.56
10" IPS	10.04	7.64	0.633	10.75	20.94	14.44	110 0010 17	2	\$593.15
12" IPS	10.63	7.8	0.75	12.75	22.64	21.3	110 0012 17	1	\$593.15

### SDR 11 (Standard Dimension Ratio) 160 PSI (Working Pressure as 73.4 F)

Nominal Diameter (inch)	A (inch)	B (inch)	C (inch) Wall	D (inch) OD	E (inch)	Weight (lbs.)	Product Code	Box Quantities	List Price
3/4" IPS	2.28	2.05	0.095	1.05	4.29	0.05	110 0075 11	40	\$9.18
1" IPS	2.48	2.17	0.119	1.315	4.69	0.08	110 0001 11	30	\$9.18
1 1/4" IPS	2.83	2.44	0.151	1.66	5.31	0.14	110 0125 11	15	\$9.44
1 1/2" IPS	3.07	2.64	0.173	1.9	5.91	0.21	110 0150 11	25	\$12.28
2" IPS	3.23	2.64	0.216	2.375	6.38	0.35	110 0002 11	20	\$15.04
3" IPS	4.72	3.86	0.318	3.5	9.33	1.07	110 0003 11	6	\$23.48
4" IPS	5.31	4.21	0.409	4.5	10.63	2	110 0004 11	3	\$27.58
6" IPS	6.89	5.35	0.603	6.625	14.09	5.55	110 0006 11	4	\$80.70
8" IPS	8.46	6.54	0.785	8.625	17.48	11.64	110 0008 11	1	\$221.74
10" IPS	10.04	7.64	0.978	10.75	20.94	21.3	110 0010 11	2	\$659.04
12" IPS	10.63	7.8	1.16	12.75	22.64	31.84	110 0012 11	1	\$659.04

## Butt 90 Degree Elbows

Elongated



Molded of  
PE 3408 / PE100  
Black  
CODE 113

### SDR 17 (Standard Dimension Ratio) 100 PSI (Working Pressure as 73.4 F)

Nominal Diameter (inch)	A (inch)	B (inch)	C (inch) Wall	D (inch) OD	E (inch)	Weight (lbs.)	Product Code	Box Quantities	List Price
2" IPS	4.25	2.95	0.14	2.375	5.44	0.28	113 0002 17	14	\$11.03
3" IPS	5.91	4.06	0.206	3.5	7.66	0.8	113 0003 17	5	\$21.13
4" IPS	6.89	4.53	0.264	4.5	9.14	1.64	113 0004 17	6	\$24.82
6" IPS	9.06	5.63	0.39	6.625	12.37	4.8	113 0006 17	2	\$72.62
8" IPS	11.81	7.2	0.508	8.625	16.13	10.05	113 0008 17	1	\$199.54
10" IPS	13.78	8.27	0.633	10.75	19.15	18.33	113 0010 17	2	\$593.15
12" IPS	14.96	8.46	0.75	12.75	21.33	27.47	113 0012 17	1	\$593.15

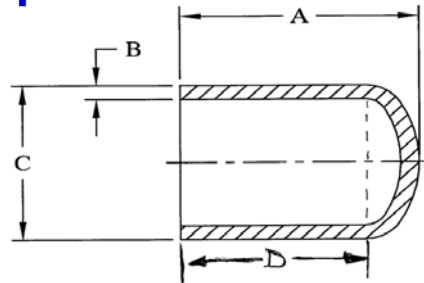
### SDR 11 (Standard Dimension Ratio) 160 PSI (Working Pressure as 73.4 F)

Nominal Diameter (inch)	A (inch)	B (inch)	C (inch) Wall	D (inch) OD	E (inch)	Weight (lbs.)	Product Code	Box Quantities	List Price
3/4" IPS	2.68	2.05	0.095	1.05	3.2	0.05	113 0075 11	40	\$6.59
1" IPS	2.91	2.17	0.119	1.315	3.57	0.09	113 0001 11	25	\$6.59
1 1/4" IPS	3.35	2.44	0.151	1.66	4.18	0.16	113 0125 11	15	\$8.81
1 1/2" IPS	3.7	2.64	0.173	1.9	4.65	0.22	113 0150 11	10	\$10.98
2" IPS	4.25	2.95	0.216	2.375	5.44	0.43	113 0002 11	14	\$12.25
3" IPS	5.91	4.06	0.318	3.5	7.66	1.25	113 0003 11	5	\$23.48
4" IPS	6.89	4.53	0.409	4.5	9.14	2.42	113 0004 11	6	\$27.58
6" IPS	9.06	5.63	0.603	6.625	12.37	6.76	113 0006 11	2	\$80.70
8" IPS	11.81	7.2	0.785	8.625	16.13	15.08	113 0008 11	1	\$221.74
10" IPS	13.78	8.27	0.978	10.75	19.15	27.06	113 0010 11	2	\$659.04
12" IPS	14.96	8.46	1.16	12.75	21.33	41.05	113 0012 11	1	\$659.04

## Butt End Caps

Elongated

Molded of  
PE 3408 / PE100  
Black  
CODE 114



### SDR 17 (Standard Dimension Ratio) 100 PSI (Working Pressure at 73.4 'F)

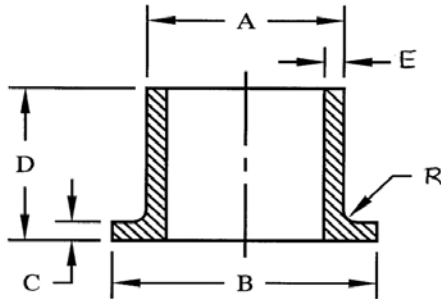
Nominal Diameter (inch)	A (inch)	B (inch) Wall	C (inch) OD	D (inch)	Weight (lbs.)	Product Code	Box Quantities	List Price
2" IPS	3.23	0.14	2.375	2.52	0.12	114 0002 17	40	\$4.85
3" IPS	4.72	0.206	3.5	3.7	0.39	114 0003 17	16	\$8.98
4" IPS	5.31	0.264	4.5	3.98	0.71	114 0004 17	10	\$19.94
6" IPS	6.89	0.39	6.625	4.84	1.98	114 0006 17	4	\$51.82
8" IPS	8.66	0.508	8.625	5.83	4.23	114 0008 17	1	\$76.93
10" IPS	9.84	0.633	10.75	6.3	7.53	114 0010 17	2	\$492.47
12" IPS	11.77	0.75	12.75	7.52	12.4	114 0012 17	1	\$513.92

### SDR 11 (Standard Dimension Ratio) 160 PSI (Working Pressure at 73.4 'F)

Nominal Diameter (inch)	A (inch)	B (inch) Wall	C (inch) OD	D (inch)	Weight (lbs.)	Product Code	Box Quantities	List Price
3/4" IPS	2.05	0.095	1.05	1.77	0.02	114 0075 11	100	\$3.13
1" IPS	2.2	0.119	1.315	1.77	0.04	114 0001 11	70	\$4.38
1 1/4" IPS	2.52	0.151	1.66	1.99	0.07	114 0125 11	50	\$4.38
1 1/2" IPS	2.83	0.173	1.9	2.2	0.1	114 0150 11	35	\$5.52
2" IPS	3.23	0.216	2.375	2.52	0.19	114 0002 11	40	\$4.85
3" IPS	4.72	0.318	3.5	3.7	0.59	114 0003 11	16	\$8.98
4" IPS	5.31	0.409	4.5	3.98	1.07	114 0004 11	10	\$19.94
6" IPS	6.89	0.603	6.625	4.84	2.88	114 0006 11	4	\$51.82
8" IPS	8.66	0.785	8.625	5.83	6.32	114 0008 11	1	\$76.93
10" IPS	9.84	0.978	10.75	6.3	10.9	114 0010 11	2	\$492.47
12" IPS	11.77	1.16	12.75	7.52	18.39	114 0012 11	1	\$513.92

## Butt Flange Adapters

Elongated



Molded of  
PE 3408 / PE100  
Black  
CODE 112

### SDR 17 (Standard Dimension Ratio) 100 PSI (Working Pressure at 73.4 °F)

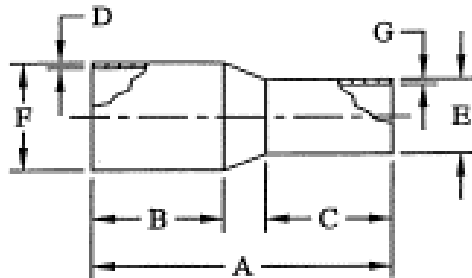
Nominal Diameter (inch)	A (inch) OD	B (inch)	C (inch)	D (inch)	E (inch) Wall	Weight (lbs.)	Product Code	Box Quantities	List Price
2" IPS	2.375	3.94	0.55	6.1	0.14	0.37	112 0002 17	12	\$22.50
3" IPS	3.5	5	0.67	6.1	0.206	0.71	112 0003 17	6	\$27.58
4" IPS	4.5	6.61	0.79	6.1	0.264	1.27	112 0004 17	4	\$30.65
6" IPS	6.625	8.5	1.02	8.07	0.39	3.02	112 0006 17	4	\$45.98
8" IPS	8.625	10.63	1.02	10.67	0.508	6.02	112 0008 17	2	\$73.56
10" IPS	10.75	12.99	1.18	11.5	0.633	10.06	112 0010 17	14	\$100.13
12" IPS	12.75	15.75	1.38	10.83	0.75	14.17	112 0012 17	14	\$149.18

### SDR 11 (Standard Dimension Ratio) 160 PSI (Working Pressure at 73.4 °F)

Nominal Diameter (inch)	A (inch) OD	B (inch)	C (inch)	D (inch)	E (inch) Wall	Weight (lbs.)	Product Code	Box Quantities	List Price
3/4" IPS	1.05	1.85	0.39	4.02	0.095	0.07	112 0075 11	40	\$6.41
1" IPS	1.315	2.36	0.39	4.02	0.119	0.11	112 0001 11	24	\$10.04
1 1/4" IPS	1.66	2.8	0.39	4.02	0.151	0.16	112 0125 11	30	\$13.75
1 1/2" IPS	1.9	3.15	0.39	4.02	0.173	0.12	112 0150 11	25	\$17.86
2" IPS	2.375	3.94	0.55	6.1	0.216	0.48	112 0002 11	12	\$22.50
3" IPS	3.5	5	0.67	6.1	0.318	0.93	112 0003 11	6	\$27.58
4" IPS	4.5	6.61	0.79	6.1	0.409	1.66	112 0004 11	4	\$30.65
6" IPS	6.625	8.5	1.02	8.07	0.603	4.07	112 0006 11	4	\$45.98
8" IPS	8.625	10.63	1.26	10.67	0.785	8.73	112 0008 11	2	\$73.56
10" IPS	10.75	12.99	1.38	11.5	0.978	14.11	112 0010 11	14	\$100.13
12" IPS	12.75	15.75	1.5	10.83	1.16	19.88	112 0012 11	14	\$149.18

## Butt Reducers

Concentric  
Elongated



Molded of  
PE 3408 / PE100  
Black  
CODE 118

### SDR 17 (Standard Dimension Ratio) 100 PSI (Working Pressure at 73.4 'F)

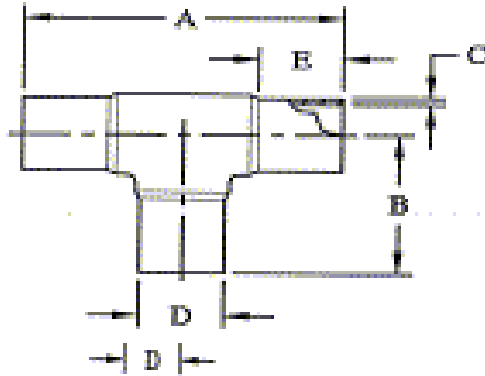
Nominal Diameter (inch)	A (inch)	B (inch)	C (inch)	D (inch) Wall	E (inch) OD	F (inch) OD	G (inch) Wall	Weight (lbs.)	Product Code	Box Qty.	List Price
3 x 2" IPS	7.87	3.94	2.95	0.206	2.375	3.5	0.14	0.47	118 0302 17	25	\$14.28
4 x 2" IPS	9.06	4.33	2.95	0.264	2.375	4.5	0.14	0.8	118 0402 17	3	\$21.44
4 x 3" IPS	9.06	4.33	3.94	0.264	3.5	4.5	0.206	0.94	118 0403 17	5	\$21.44
6 x 3" IPS	11.42	5.12	3.94	0.39	3.5	6.625	0.206	2.18	118 0603 17	3	\$60.26
6 x 4" IPS	11.42	5.12	4.33	0.39	4.5	6.625	0.264	2.39	118 0604 17	3	\$50.08
8 x 6" IPS	12.8	6.1	5.12	0.508	6.625	8.625	0.39	4.92	118 0806 17	2	\$87.86
10 x 8" IPS	14.37	6.25	5.813	0.75	8.625	10.75	0.508	10.21	118 1008 17	2	\$134.65
12 x 8" IPS	16.54	7.09	6.1	0.75	8.625	12.75	0.508	12.82	118 1208 17	1	\$195.96
12 x 10" IPS	16.54	7.09	6.69	0.75	10.75	12.75	0.633	14.43	118 1210 17	1	\$178.14

### SDR 11 (Standard Dimension Ratio) 160 PSI (Working Pressure at 73.4 'F)

Nominal Diameter (inch)	A (inch)	B (inch)	C (inch)	D (inch) Wall	E (inch) OD	F (inch) OD	G (inch) Wall	Weight (lbs.)	Product Code	Box Qty.	List Price
2 x 1½" IPS	6.5	2.95	2.64	0.216	1.9	2.375	0.173	0.29	118 2150 11	25	\$10.98
3 x 2" IPS	7.87	3.94	2.95	0.318	2.375	3.5	0.216	0.7	118 0302 11	25	\$14.28
4 x 2" IPS	9.06	4.33	2.95	0.409	2.375	4.5	0.216	1.21	118 0402 11	5	\$21.44
4 x 3" IPS	9.06	4.33	3.94	0.409	3.5	4.5	0.318	1.41	118 0403 11	5	\$21.44
6 x 3" IPS	11.42	5.12	3.94	0.603	3.5	6.625	0.318	3.21	118 0603 11	3	\$60.26
6 x 4" IPS	11.42	5.12	4.33	0.603	4.5	6.625	0.409	3.54	118 0604 11	3	\$50.08
8 x 6" IPS	12.8	6.1	5.12	0.785	6.625	8.625	0.603	7.31	118 0806 11	2	\$87.86
10 x 8" IPS	14.37	6.25	5.875	1.16	8.625	10.75	0.785	15.45	118 1008 11	2	\$134.65
12 x 8" IPS	16.54	7.09	6.1	1.16	8.625	12.75	0.785	19.11	118 1208 11	1	\$195.96
12 x 10" IPS	16.54	7.09	6.69	1.16	10.75	12.75	0.978	21.66	118 1210 11	1	\$178.14

## Butt Tees

Elongated



Molded of  
PE 3408 / PE100  
Black  
CODE 115

Nominal Diameter (inch)	A (inch)	B (inch)	C (inch)	D (inch)	E (inch)	Weight (lbs.)	Product Code	Box Quantitie	List Price
2" IPS	8.66	4.33	0.14	2.375	2.48	0.53	115 0002 17	7	\$13.79
3" IPS	11.81	5.91	0.206	3.5	3.54	1.45	115 0003 17	10	\$22.08
4" IPS	13.78	6.89	0.264	4.5	3.94	2.58	115 0004 17	3	\$34.94
6" IPS	18.11	9.06	0.39	6.625	4.72	7.24	115 0006 17	2	\$86.41
8" IPS	23.62	11.81	0.508	8.625	5.71	16.6	115 0008 17	1	\$239.10
10" IPS	27.56	13.78	0.633	10.75	6.3	28.9	115 0010 17	1	\$557.75
12" IPS	31.57	15.97	0.75	12.75	7.52	45.32	115 0012 17	1	\$894.76

### SDR 11 (Standard Dimension Ratio) 160 PSI (Working Pressure at 73.4 'F)

Nominal Diameter (inch)	A (inch)	B (inch)	C (inch)	D (inch)	E (inch)	Weight (lbs.)	Product Code	Box Quantitie	List Price
3/4" IPS	5	2.5	0.095	1.05	1.77	0.09	115 0075 11	25	\$6.59
1" IPS	5.67	2.83	0.119	1.315	1.77	0.17	115 0001 11	15	\$6.59
1 1/4" IPS	6.61	3.31	0.151	1.66	2.01	0.3	115 0125 11	10	\$8.80
1 1/2" IPS	7.99	4	0.173	1.9	2.52	0.47	115 0150 11	15	\$10.98
2" IPS	8.66	4.33	0.216	2.375	2.48	0.82	115 0002 11	7	\$15.34
3" IPS	11.81	5.91	0.318	3.5	3.54	2.18	115 0003 11	10	\$24.54
4" IPS	13.78	6.89	0.409	4.5	3.94	4.02	115 0004 11	3	\$38.82
6" IPS	18.11	9.06	0.603	6.625	4.72	10.91	115 0006 11	2	\$96.04
8" IPS	23.62	11.81	0.785	8.625	5.71	24.61	115 0008 11	1	\$265.66
10" IPS	27.56	13.78	0.978	10.75	6.3	42.6	115 0010 11	1	\$691.70
12" IPS	31.57	15.97	1.16	12.75	7.52	67.85	115 0012 11	1	\$994.18